



Alton Road, South Warnborough

McCarthy
Holden

Guide Price £695,000



Meadow View Alton Road

South Warnborough

A well presented detached, four bedroom family home, situated in the desirable village of South Warnborough enjoying lovely countryside views. Offered to the market with no onward chain.

Council Tax band: D

Tenure: Freehold

EPC Energy Efficiency Rating: D

- No Onward Chain
- Living/Dining Room
- Kitchen/Breakfast Room & Utility
- Four Bedrooms
- Two Bathrooms
- South Facing Garden with Countryside Views
- Driveway & Garage





This well presented, detached, four bedroom family home is situated in the desirable village of South Warnborough enjoying lovely countryside views. Meadow View offers flexible family living with no onward chain.

Upon entering, you are welcomed into a good sized hallway with a convenient W.C. This leads into a bright and airy open-plan living and dining area, featuring patio doors that open onto the rear garden. The living space is further enhanced by an open fireplace creating a warm and inviting atmosphere.

The well-appointed kitchen/breakfast room comes complete with integrated appliances and breakfast bar leading into a practical utility room with side access. Additionally, there is a versatile extra room currently used as a study, ideal for home working or children's playroom.

Upstairs, the property offers four generously sized bedrooms, all benefiting from picturesque countryside views, along with a modern family bathroom. The principal bedroom also features a fitted en-suite shower room.

Outside, the property boasts a substantial, west facing rear garden, mainly laid to lawn and complemented by mature well-stocked flower borders, shrubs, and trees. The garden backs onto open fields, providing an idyllic outlook with the sun setting over the garden.

To the front is a lawned garden, ample driveway parking and a garage with lighting and power.





Alton Road, South Warnborough, Hook, RG29

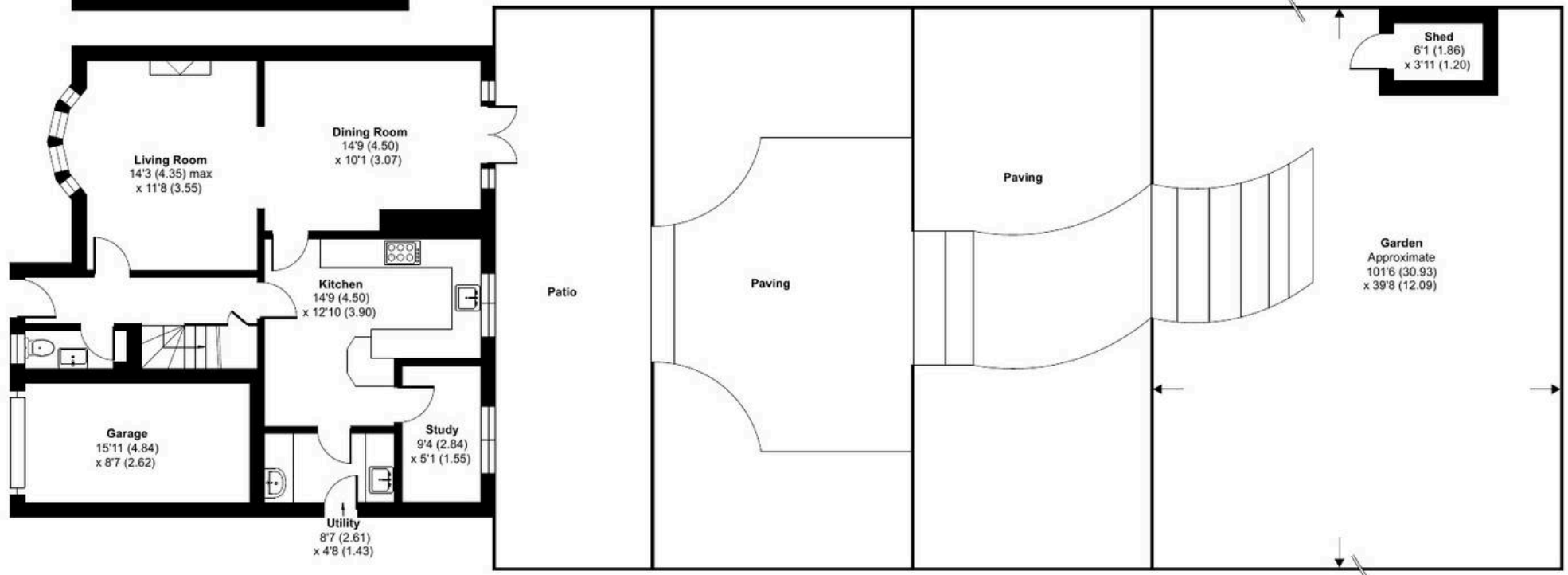
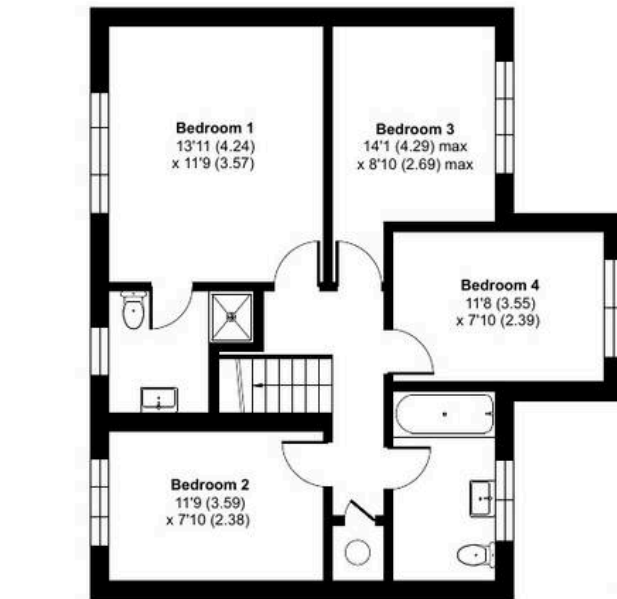
Approximate Area = 1413 sq ft / 131.2 sq m

Garage = 125 sq ft / 11.6 sq m

Outbuilding = 24 sq ft / 2.2 sq m

Total = 1562 sq ft / 145 sq m

For identification only - Not to scale







McCarthy Holden Odiham

McCarthy Holden, 95 High Street - RG29 1LA

01256 704851 • odiham@mccarthyholden.co.uk • www.mccarthyholden.co.uk

These particulars are provided in good faith under the Consumer Protection from Unfair Trading Regulations 2008 and are for guidance only. They do not form part of any contract. No survey has been carried out, and services or fittings have not been tested. Photos and floor plans are illustrative; items shown may not be included. Buyers/tenants must verify all details. Fixtures & Fittings: Excluded unless specifically stated.