



17 Weatherby Gardens, Hartley Wintney

McCarthy
Holden

Guide Price £625,000



17 Weatherby Gardens

Hartley Wintney,

A charming end-of-terrace three-bedroom home situated in a highly desirable and sought-after location. Offered to the market with no onward chain
Council Tax band: E

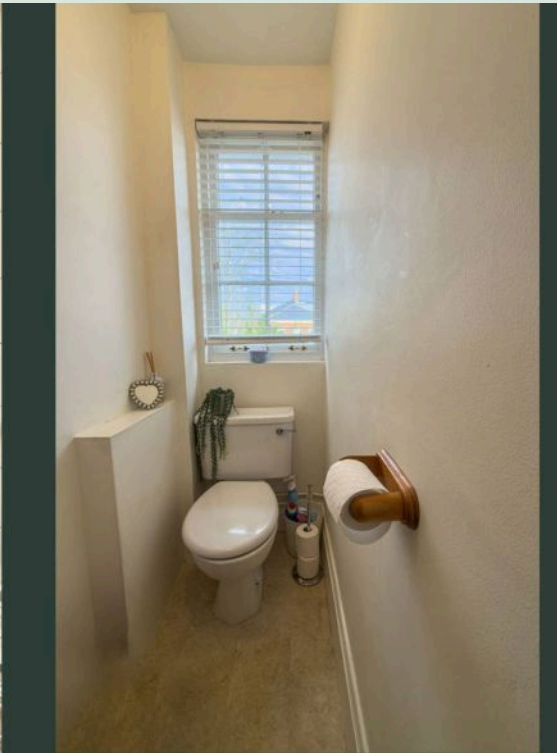
Tenure: Freehold

EPC Energy Efficiency Rating: D

EPC Environmental Impact Rating: E

- No onward chain
- Village centre location
- Desirable location
- Close to shops and amenities





A charming end-of-terrace three-bedroom home situated in a highly desirable and sought-after location. Offered to the market with no onward chain

Ground Floor

Entering the property, you are welcomed into a large entrance hall which leads to the sitting room, providing a warm and inviting space ideal for both everyday relaxation and entertaining. The kitchen features plenty of work surface work surfaces and generous storage, with plenty of room for meal preparation and day to day living. Adjacent to the kitchen is a good sized dining area. Completing the ground floor is the cloakroom.

First Floor

On the first floor, there are three well-proportioned bedrooms. The main bedroom benefits from built in storage. The remaining two bedrooms are equally versatile and would work well as children's rooms, guest accommodation, or a dedicated home office, depending on requirements. Also on this floor is a family bathroom serving all bedrooms.

Outside

To the rear, the property enjoys a private, enclosed garden providing an ideal space for outdoor dining and relaxation. As an end-of-terrace home, it also benefits from useful side access. Parking is available within the surrounding residential area.

- No onward chain
- Village centre location
- Desirable location
- Close to shops and amenities



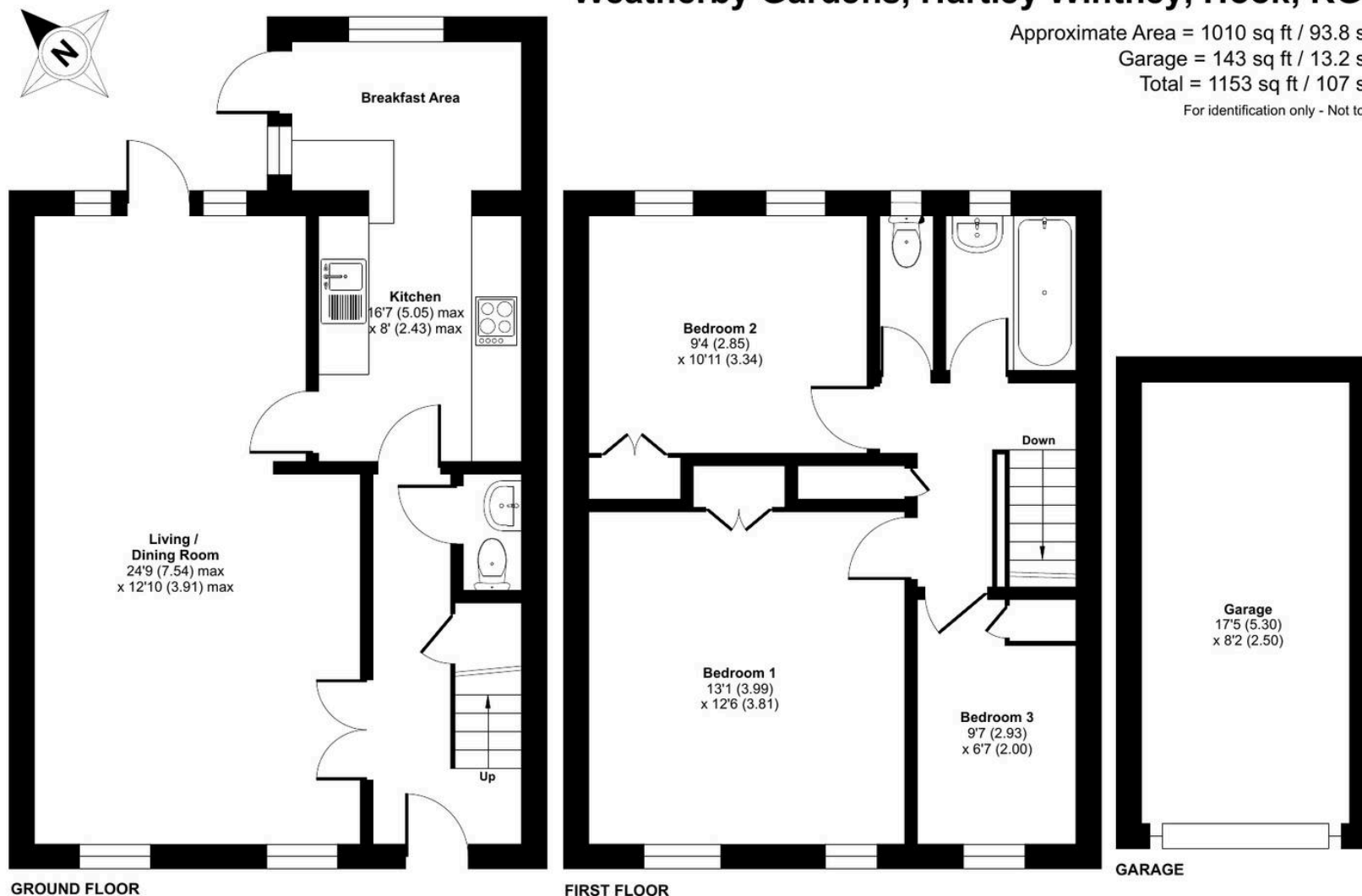
Weatherby Gardens, Hartley Wintney, Hook, RG27

Approximate Area = 1010 sq ft / 93.8 sq m

Garage = 143 sq ft / 13.2 sq m

Total = 1153 sq ft / 107 sq m

For identification only - Not to scale



Floor plan produced in accordance with RICS Property Measurement 2nd Edition, Incorporating International Property Measurement Standards (IPMS2 Residential). © nchecon 2025. Produced for McCarthy Holden. REF: 1375102

McCarthy Holden Hartley Wintney

McCarthy Holden, 61 High Street - RG27 8NY

01252 842100 • hw@mccarthyholden.co.uk • www.mccarthyholden.co.uk/

These particulars are provided in good faith under the Consumer Protection from Unfair Trading Regulations 2008 and are for guidance only. They do not form part of any contract. No survey has been carried out, and services or fittings have not been tested. Photos and floor plans are illustrative; items shown may not be included. Buyers/tenants must verify all details. Fixtures & Fittings: Excluded unless specifically stated.