

Bridge House, Fleet One Bedroom Apartment



Bridge House, Fleet, Hampshire, GU51 4AP

The Property

This one bedroom apartment is situated in the heart of Fleet town centre. Its ideal as a first time or investment purchase.

Accommodation

The apartment is in a building that was converted into residential accommodation in 2019 and offers modern living with an open plan living/dining/kitchen.

There are four windows in the living area making it light and airy and the kitchen has been fitted with a range of white units and appliances including oven, hob, extractor, fridge, freezer, dishwasher and washer/dryer.

There is a double bedroom and a well appointed shower room with a large shower cubicle and vanity unit with concealed cistern and wash hand basin.

The property further benefits from electric heating.

Outside

The property also benefits from allocated parking.

Additional Information

Service Charge - £1015.84 per year

Ground Rent - £175 per year

Lease - 150 years

Location

Fleet has excellent commuter links by both rail and road. There are regular trains to London Waterloo taking around 43 minutes and the town is located off Junction 4a of the M3 motorway which links to the M25.

Fleet town centre offers comprehensive shopping and leisure facilities, restaurants, bars and coffee shops, schools for all age groups, churches of various denominations and various health care services.



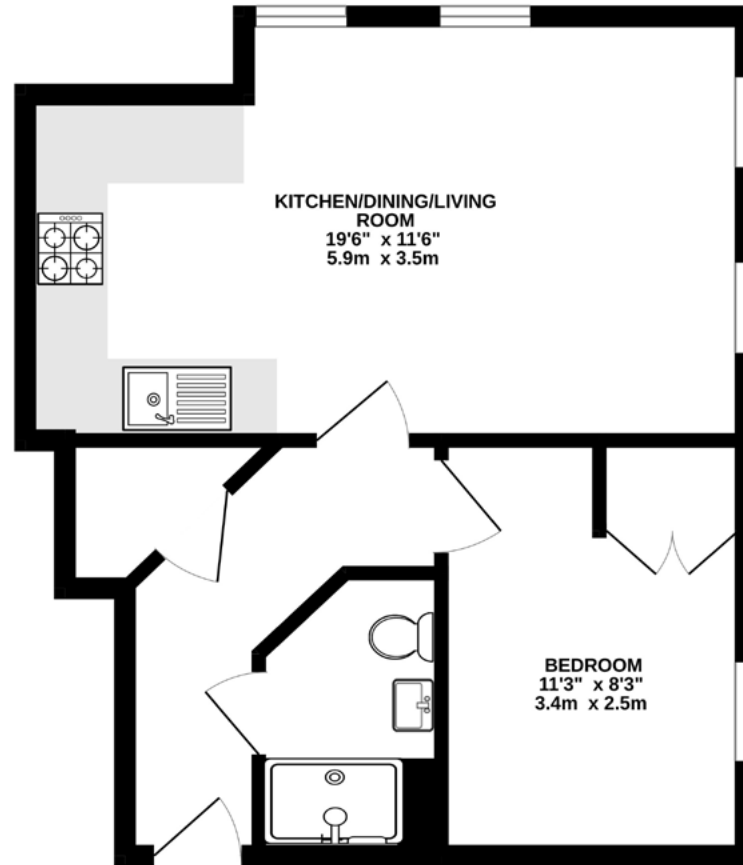












Whilst every attempt has been made to ensure the accuracy of the floorplan contained here, measurements of doors, windows, rooms and any other items are approximate and no responsibility is taken for any error, omission or mis-statement. This plan is for illustrative purposes only and should be used as such by any prospective purchaser. The services, systems and appliances shown have not been tested and no guarantee as to their operability or efficiency can be given.
Made with Metropix ©2023

Places of interest

A selection of photographs showing various locations in and around Fleet are shown below.



Fleet Pond



Basingstoke Canal



Fleet Mainline Railway Station



Basingstoke Canal



Fleet High Street

Consumer Protection Regulations

McCarthy Holden give notice that the particulars are produced in good faith and in accordance with the Consumer Protection from Unfair Trading Regulations 2008 (CPR).

They are set out as a general guide only and do not constitute any part of a contract or warranty whatsoever. Intending purchasers or tenants should not rely on them as statements of representation of fact, but must satisfy themselves by inspection or otherwise as to their accuracy. No person in the employment of McCarthy Holden has any authority to make or give any representation or warranty whatever in relation to the property. A detailed survey has not been carried out nor have the services, heating systems, appliances or specific fittings been tested. Any photograph incorporated within these particulars shows only certain parts of the property and it must not be assumed that any contents or fixtures and fittings shown in the photographs are either included with the property or indeed remain in it. Room sizes shown and any floor plans should not be relied upon for carpets and furnishings. Land estimate is a guide and it has not been possible to quantify accurately.

If there is any point which is of particular importance to you we will be pleased to check the information for you and confirm that the property remains available. This is particularly important if you are contemplating travelling some distance to view the property.

Directions - Postcode GU51 4AP. Please contact McCarthy Holden for detailed directions

Fixtures and fittings: All items of fixtures and fittings, including but not exclusively carpets, curtains/blinds, light fittings, kitchen equipment and garden ornaments etc. are specifically excluded unless mentioned.

Viewing

Telephone sole agents
McCarthy Holden: 01252 620640

Services

Mains electricity, water and drainage.
Gas Central Heating
EPC Rating - D (57)

Local Authority

[Hart District Council](#)
[Council Tax Band - B](#)

McCarthy
Holden 

www.mccarthyholden.co.uk